

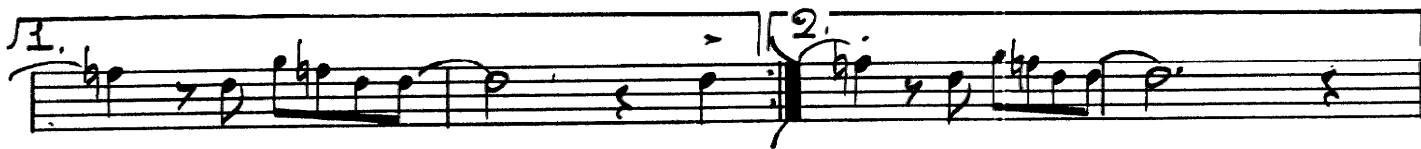
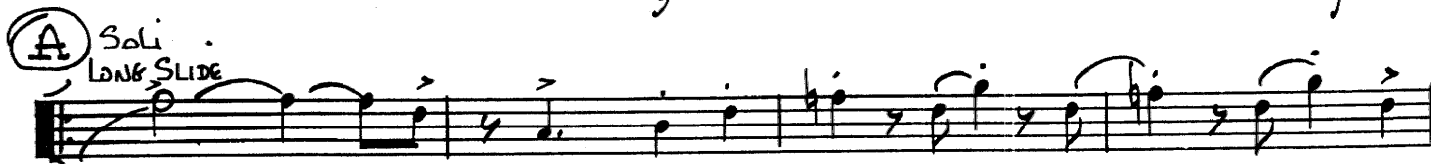
126

# THE CREEPER

Composed and Arranged by  
NEAL HEFTI

1st Eb ALTO SAXOPHONE

MEDIUM "SLO"  $\text{♩} = 120$   
LEGATO TONGUE



© Copyright 1961 by Neal Hefti Music, Inc., 57 West 56th St., New York 19, N. Y.  
This arrangement © Copyright 1963 by Neal Hefti Music, Inc.  
International Copyright Secured Printed in U.S.A.  
All rights reserved including the right of public performance for profit

DB 105

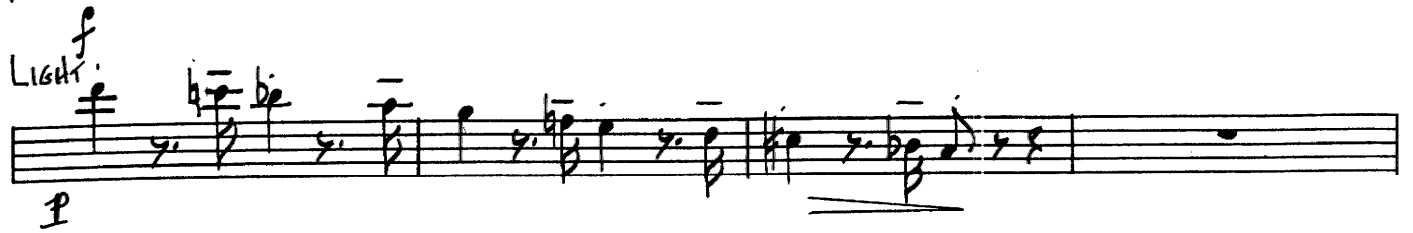
1st Eb ALTO SAXOPHONE

Soli



Musical staff with notes, slurs, and accents. The key signature has one sharp (F#). The staff contains several measures of music with slurs and accents.

Light. f



Musical staff with notes, slurs, and dynamics. The dynamic marking is *f*. The staff contains several measures of music with slurs and dynamics.

Soli f



Musical staff with notes, slurs, and dynamics. The dynamic marking is *f*. The staff contains several measures of music with slurs and dynamics.

© Soli UNIS LEGATO TONGUE mf



Musical staff with notes, slurs, and dynamics. The dynamic marking is *mf*. The staff contains several measures of music with slurs and dynamics.



Musical staff with notes, slurs, and dynamics. The staff contains several measures of music with slurs and dynamics.

Ⓓ



Musical staff with notes, slurs, and dynamics. The staff contains several measures of music with slurs and dynamics.



Musical staff with notes, slurs, and dynamics. The staff contains several measures of music with slurs and dynamics.

Ⓔ



Musical staff with notes, slurs, and dynamics. The staff contains several measures of music with slurs and dynamics.

ff p



Musical staff with notes, slurs, and dynamics. The dynamic markings are *ff* and *p*. The staff contains several measures of music with slurs and dynamics.

126

# THE CREEPER

Composed and Arranged by  
NEAL HEFTI

2nd  $E\flat$  ALTO SAXOPHONE

MEDIUM SLOW  $\text{♩} = 120$   
LEGATO TONGUE



**A** Soli  
LONG SLIDE



**B** LIGHT AS POSSIBLE



© Copyright 1961 by Neal Hefti Music, Inc., 57 West 56th St., New York 19, N. Y.  
This arrangement © Copyright 1963 by Neal Hefti Music, Inc.  
International Copyright Secured Printed in U.S.A.  
All rights reserved including the right of public performance for profit

DB 105

2nd Eb ALTO SAXOPHONE

Soli

A musical staff in G major with a treble clef. It contains a melodic line starting with a quarter rest, followed by quarter notes G4, A4, B4, and C5. The notes are marked with accents (^) and slurs. The staff ends with a quarter rest.

LIGHT *f*

A musical staff in G major with a treble clef. It contains a melodic line starting with a quarter rest, followed by quarter notes G4, A4, B4, and C5. The notes are marked with accents (^) and slurs. The staff ends with a quarter rest.

Soli *f*

A musical staff in G major with a treble clef. It contains a melodic line starting with a quarter rest, followed by quarter notes G4, A4, B4, and C5. The notes are marked with accents (^) and slurs. The staff ends with a quarter rest.

→ (C)

Soli UNIS  
LEGATO TONGUES

A musical staff in G major with a treble clef. It contains a melodic line starting with a quarter rest, followed by quarter notes G4, A4, B4, and C5. The notes are marked with accents (^) and slurs. The staff ends with a quarter rest.

A musical staff in G major with a treble clef. It contains a melodic line starting with a quarter rest, followed by quarter notes G4, A4, B4, and C5. The notes are marked with accents (^) and slurs. The staff ends with a quarter rest.

(D)

A musical staff in G major with a treble clef. It contains a melodic line starting with a quarter rest, followed by quarter notes G4, A4, B4, and C5. The notes are marked with accents (^) and slurs. The staff ends with a quarter rest.

A musical staff in G major with a treble clef. It contains a melodic line starting with a quarter rest, followed by quarter notes G4, A4, B4, and C5. The notes are marked with accents (^) and slurs. The staff ends with a quarter rest.

(E)

A musical staff in G major with a treble clef. It contains a melodic line starting with a quarter rest, followed by quarter notes G4, A4, B4, and C5. The notes are marked with accents (^) and slurs. The staff ends with a quarter rest.

A musical staff in G major with a treble clef. It contains a melodic line starting with a quarter rest, followed by quarter notes G4, A4, B4, and C5. The notes are marked with accents (^) and slurs. The staff ends with a quarter rest.

126

# THE CREEPER

Composed and Arranged by  
NEAL HEFTI

1st B $\flat$  TENOR SAXOPHONE

MEDIUM "SLOW"  $\text{♩} = 120$

LEGATO TONGUE



(A)

Solo

LONG SLIDE



(B)

LIGHT AS POSSIBLE



© Copyright 1961 by Neal Hefti Music, Inc., 57 West 56th St., New York 19, N. Y.  
This arrangement © Copyright 1963 by Neal Hefti Music, Inc.  
International Copyright Secured Printed in U.S.A.  
All rights reserved including the right of public performance for profit

1st B $\flat$  TENOR SAXOPHONE

Soli *f*

Light *p*

Soli *f* Soli unis *mf*

LONG SLIDE

(D)

(E) *f*

*p* *ff*

126

# THE CREEPER

2nd B $\flat$  TENOR SAXOPHONE

Composed and Arranged by  
NEAL HEFTI

MEDIUM SLOW  $\text{♩} = 120$

LEGATO TONGUE

(A) Soli  
LONG  
SLIDE

(B) LIGHT AS POSSIBLE



© Copyright 1961 by Neal Hefti Music, Inc., 57 West 56th St., New York 19, N. Y.  
This arrangement © Copyright 1963 by Neal Hefti Music, Inc.  
International Copyright Secured Printed in U.S.A.  
All rights reserved including the right of public performance for profit

2nd B♭ TENOR SAXOPHONE

Soli  
*f*

Light  
*p*

Soli  
*f*

Soli Unus  
*mf*

©

⑤

*fz*

*p*



126

# THE CREEPER

Composed and Arranged by  
NEAL HEFTI

E♭ BARITONE SAXOPHONE

MEDIUM 'SLOW' ♩ = 120

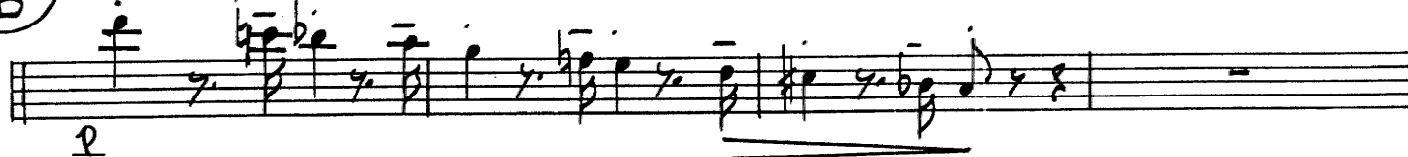
LEGATO TONGUE



(A) Solo  
LONG SLIDE



(B) Light as possible



© Copyright 1961 by Neal Hefti Music, Inc., 57 West 56th St., New York 19, N. Y.  
This arrangement © Copyright 1963 by Neal Hefti Music, Inc.  
International Copyright Secured Printed in U.S.A.  
All rights reserved including the right of public performance for profit

# E♭ BARITONE SAXOPHONE

*Soli*  
*f*

*Light:*  
*p*

*Soli*  
*f*

*Soli UNIS*  
*mf*

2nd time at C

(C)

(D)

(E)

*fz*

*p*

12

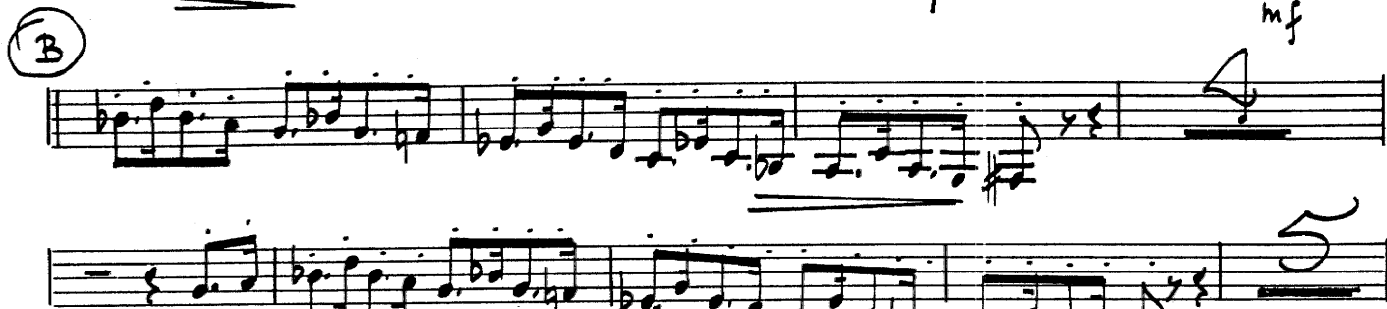
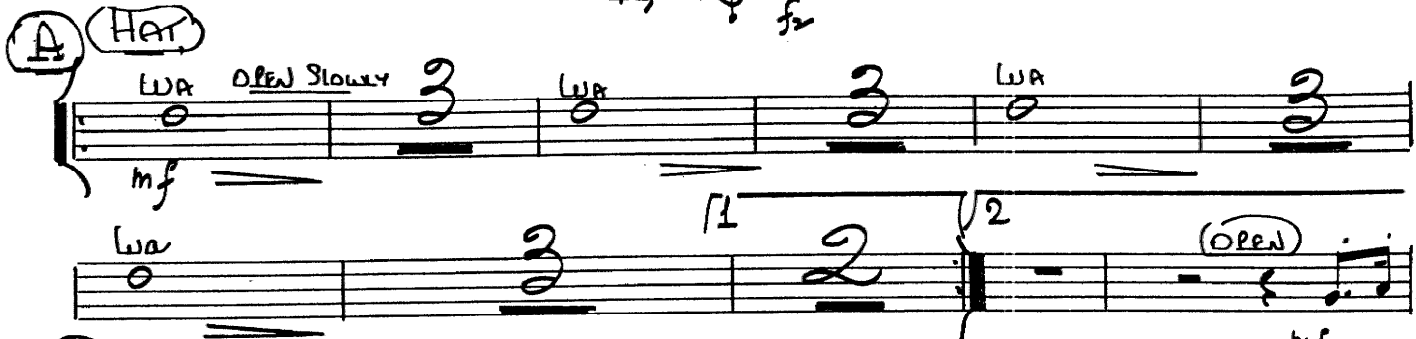
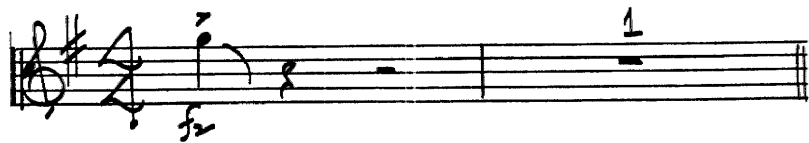
(126)

# THE CREEPER

Composed and Arranged by  
NEAL HEFTI

1st TRUMPET in B $\flat$

MEDIUM "Slow"  $\text{♩} = 120$



© Copyright 1961 by Neal Hefti Music, Inc., 57 West 56th St., New York 19, N. Y.  
This arrangement © Copyright 1963 by Neal Hefti Music, Inc.  
International Copyright Secured Printed in U.S.A.  
All rights reserved including the right of public performance for profit

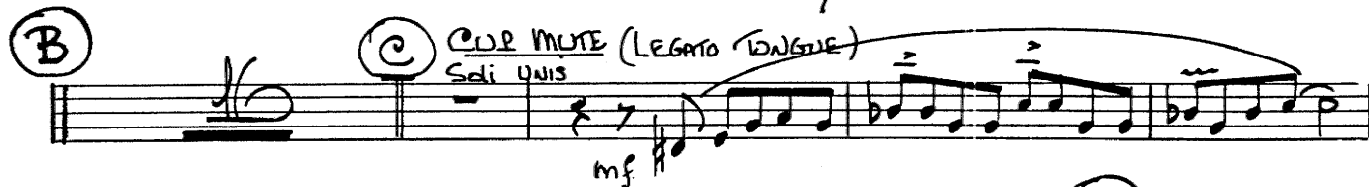
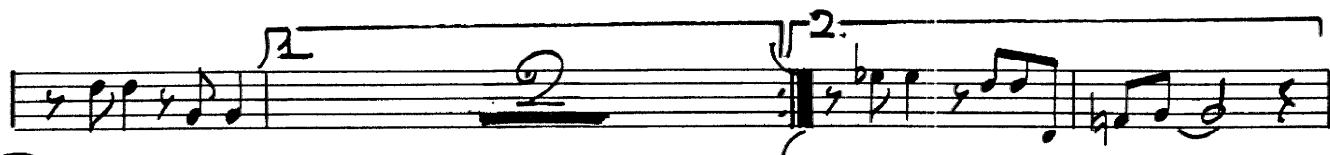
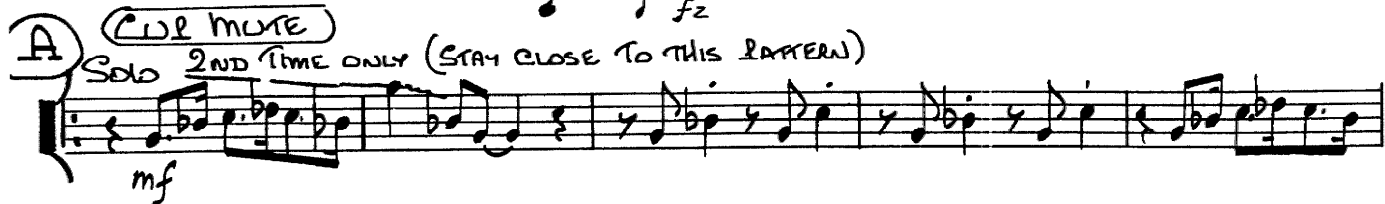
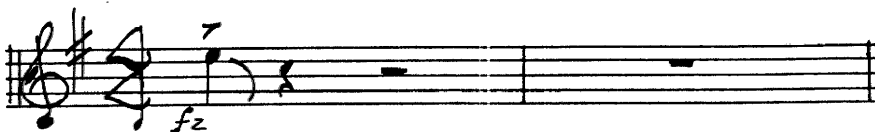


# THE CREEPER

Composed and Arranged by  
NEAL HEFTI

2nd TRUMPET in B $\flat$

MEDIUM "SOLO"  $\text{♩} = 120$



© Copyright 1961 by Neal Hefti Music, Inc., 57 West 56th St., New York 19, N. Y.  
This arrangement © Copyright 1963 by Neal Hefti Music, Inc.  
International Copyright Secured Printed in U.S.A.  
All rights reserved including the right of public performance for profit

126

# THE CREEPER

Composed and Arranged by  
NEAL HEFTI

3rd TRUMPET in Bb

MEDIUM "Solo" J = 120

**A** **HAT**

WA (OPEN SLOWLY) 3 WA 3 WA 3

mf

WA 1 2 (OPEN) mf

**B**

mf

EBC B A C A G F# 123

**C** **COIL MOTE** Sali- Unis LEGATO TONGUE

mf

**D**

**E**

**OPEN** **HAT** *plunger*

f p pp



© Copyright 1961 by Neal Hefti Music, Inc., 57 West 56th St., New York 19, N. Y.  
 This arrangement © Copyright 1963 by Neal Hefti Music, Inc.  
 International Copyright Secured Printed in U.S.A.  
 All rights reserved including the right of public performance for profit

# THE CREEPER

Composed and Arranged by  
NEAL HEFTI

4th TRUMPET in B $\flat$

MEDIUM "SLOW"  $\text{♩} = 120$

**A** (HAT)  
Wa OPEN SLOWY  
mf  
Wa  
mf  
(OPEN)

**B**

**C** (COR MORE) LEGATO TONGUE  
mf  
mf

**D**

**E**

(OPEN) (HAT)  
f  
p

126

# THE CREEPER

126

## The Creeper

Composed and Arranged by  
NEAL HEFTI

1st TROMBONE

"MEDIUM SLOW"

$\text{♩} = 120$

NOTES IN PARENTHESIS MAY  
BE OMITTED IF AWKWARD TO  
PLAY

**A** HAT wa (OLEN SLOWLY) 3 wa 3 wa

**B**

**C** SOLI UNIS LONG SLIDE

**D**

**E** OLEN f

HAT p



126

# THE CREEPER

Composed and Arranged by  
NEAL HEFTI

2nd TROMBONE

MEDIUM Solo  $\text{♩} = 120$

NOTES IN PARENTHESIS MAY BE OMITTED IF AWKWARD TO PLAY

(A) HAT

Wa (OPEN SLOW)

Wa

Wa

Wa

1.

2.

(OPEN)

(B)

Solo UNIS

(C)

LONG SLIDE

(E)

(HAT)





126

# THE CREEPER

Composed and Arranged by  
NEAL HEFTI

3rd TROMBONE

MEDIUM SLIDE ♩ = 120

NOTES IN PARENTHESIS MAY BE OMITTED IF AWKWARD TO PLAY

**A** **HAT**  
 wa OREW SLOWLY 3 wa 3 wa

wa 3 1. 2 2 mf

**B**

Soli UNIS **C** mf LONG SLIDE

**E**

**HAT** p pp



© Copyright 1961 by Neal Hefti Music, Inc., 57 West 56th St., New York 19, N. Y.  
 This arrangement © Copyright 1963 by Neal Hefti Music, Inc.  
 International Copyright Secured Printed in U.S.A.  
 All rights reserved including the right of public performance for profit

126

# THE CREEPER

Composed and Arranged by  
NEAL HEFTI

4th TROMBONE

MEDIUM "SLOW" ♩ = 120

NOTES IN PARENTHESIS MAY BE OMITTED IF TOO AWKWARD TO PLAY

The musical score for the 4th Trombone part of "The Creeper" consists of ten staves of music. The first staff begins with a treble clef and a key signature of one flat (Bb). The tempo is marked "MEDIUM 'SLOW'" with a quarter note equal to 120 beats per minute. A dynamic marking of *fz* is present. A circled note in the first staff is annotated with "HAT".

The second staff features a circled "A" and the instruction "HAT". The notes "Lwa" are written above the staff, with "(OPEN SLOWLY)" written in parentheses around the first note. The staff includes a 3/4 time signature and a fermata. A circled "OPEN" is written above the staff towards the end.

The third staff is marked with a circled "B" and contains a complex rhythmic pattern with many notes in parentheses. A 2/4 time signature is shown at the end of the staff.

The fourth staff continues the rhythmic pattern from the third staff.

The fifth staff is marked with a circled "C" and includes the instruction "Soli music" above the staff and "LONG SLIDE" below it. A dynamic marking of *mf* is present.

The sixth staff continues the melodic line from the fifth staff.

The seventh staff continues the melodic line from the sixth staff.

The eighth staff is marked with a circled "E" and includes a dynamic marking of *f*.

The ninth staff is marked with a circled "HAT" and includes dynamic markings of *p* and *pp*.



© Copyright 1961 by Neal Hefti Music, Inc., 57 West 56th St., New York 19, N. Y.  
This arrangement © Copyright 1963 by Neal Hefti Music, Inc.  
International Copyright Secured Printed in U.S.A.  
All rights reserved including the right of public performance for profit

DB 105

126

# THE CREEPER

Composed and Arranged by  
NEAL HEFTI

## DRUMS

MEDIUM SLOW  $\text{♩} = 120$

(BRUSHES ALL THE WAY) (SOLO)

(A) STRONG "2"



© Copyright 1961 by Neal Hefti Music, Inc., 57 West 56th St., New York 19, N. Y.  
 This arrangement © Copyright 1963 by Neal Hefti Music, Inc.  
 International Copyright Secured Printed in U.S.A.  
 All rights reserved including the right of public performance for profit

# THE CREEPER

Composed and Arranged by  
NEAL HEFTI

## GUITAR

MEDIUM "Solo"  $\text{♩} = 120$

(A)

Handwritten guitar notation for section A, first staff. Chords:  $Gm^7$ ,  $Fm^7$ ,  $F^6$ ,  $Fm^7$ ,  $B^b9$ ,  $Fm^7$ ,  $B^b9$ ,  $Gm^7$ ,  $Fmaj^9$ . Dynamics:  $fz$ ,  $mf$ .

Handwritten guitar notation for section A, second staff. Chords:  $F^6$ ,  $Fm^7$ ,  $B^b9$ ,  $Fm^7$ ,  $B^b9$ ,  $Gm^7$ ,  $Fmaj^9$ ,  $F^6$ ,  $Fm^7$ ,  $B^b9$ ,  $Fm^7$ ,  $B^b9$ ,  $Gm^7$ .

Handwritten guitar notation for section A, third staff. Chords:  $Fmaj^9$ ,  $F^6$ ,  $Fm^7$ ,  $B^b9$ ,  $Fm^7$ ,  $B^b9$ ,  $D^b9$ ,  $D^b$  (C BASS),  $F$ ,  $Gm^7$ .

Handwritten guitar notation for section B, first staff. Chords:  $D^b9$ ,  $D^b$  (C BASS),  $F$ . Dynamics:  $p$ . Marking: "Lightly".

Handwritten guitar notation for section B, second staff. Chords:  $C^7$ ,  $Gm^7$ ,  $C^7$ ,  $Fm^7$ ,  $C^7$ ,  $Fm^7$ . Dynamics:  $mf$ .

Handwritten guitar notation for section B, third staff. Chords:  $C^7$ ,  $Bm^b$ ,  $C^7$ ,  $D^b9$ ,  $C^7$ ,  $D^b9$ ,  $b$ ,  $b$ ,  $b$ ,  $b$ . Dynamics:  $mf$ .

Handwritten guitar notation for section C, first staff. Chords:  $Fmaj^9$ ,  $F^6$ ,  $Fm^7$ ,  $B^b9$ ,  $Fmaj^9$ ,  $F^6$ ,  $Fm^7$ ,  $B^b9$ .

Handwritten guitar notation for section D, first staff. Chords:  $Fm^7$ ,  $B^b9$ ,  $Fmaj^9$ ,  $F^6$ ,  $Fm^7$ ,  $B^b9$ ,  $Fmaj^9$ ,  $F^6$ .

Handwritten guitar notation for section E, first staff. Chords:  $Fm^7$ ,  $B^b9$ ,  $D^b9$ ,  $Gm^7$ ,  $F$ . Dynamics:  $mf$ .

Handwritten guitar notation for section E, second staff. Chords:  $C^7$ . Dynamics:  $mf$ .

# THE CREEPER

Composed and Arranged by  
NEAL HEFTI

BASS

MEDIUM "SLOL" ♩ = 120 (A)

Musical notation for the first system of the bass line, starting with a treble clef and a key signature of one flat (Bb). The first measure has a dynamic marking of *fz* and a fermata. The second measure has a circled 'A' above it and a dynamic marking of *mf*. The rest of the system consists of a steady eighth-note bass line.

Musical notation for the second system of the bass line, continuing the eighth-note bass line. It ends with a first ending bracket labeled '1.' and a repeat sign.

Musical notation for the third system of the bass line. It begins with a second ending bracket labeled '2.'. The circled 'B' is above the first measure, with the word 'LIGHTLY' written above it. The dynamic marking *p* is below the first measure. The system ends with a double bar line.

Musical notation for the fourth system of the bass line. It continues the eighth-note bass line. The dynamic marking *mf* is at the beginning. The system ends with a double bar line.

Musical notation for the fifth system of the bass line. It continues the eighth-note bass line. The word 'Solo' is written above the first measure. The system ends with a double bar line.

Musical notation for the sixth system of the bass line, continuing the eighth-note bass line. It starts with a circled 'C' above the first measure.

Musical notation for the seventh system of the bass line, continuing the eighth-note bass line. It starts with a circled 'D' above the first measure.

Musical notation for the eighth system of the bass line. It continues the eighth-note bass line. The word 'Solo' is written above the first measure. The circled 'E' is above the second measure. The dynamic marking *mf* is below the second measure. The system ends with a double bar line.

Musical notation for the ninth system of the bass line. It continues the eighth-note bass line. The dynamic marking *f* is below the first measure. The circled 'E' is above the second measure. The word '(Luz)' is written above the second measure. The dynamic marking *pp* is below the last measure. The system ends with a double bar line.

126

# THE CREEPER

Composed and Arranged by  
NEAL HEFTI

PIANO

MEDIUM Solo  $\text{♩} = 120$  (A)



© Copyright 1961 by Neal Hefti Music, Inc., 57 West 56th St., New York 19, N. Y.  
 This arrangement © Copyright 1963 by Neal Hefti Music, Inc.  
 International Copyright Secured Printed in U.S.A.  
 All rights reserved including the right of public performance for profit

DB 105

PIANO

C7 --- B<sup>b</sup>6 C7 D<sup>9</sup> C7 B<sup>9</sup>

Soli *mf* *cd* *T. solo* no Soli

Fmaj<sup>9</sup> --- F<sup>6</sup> --- Fm<sup>7</sup> - B<sup>b</sup>9 / Fm<sup>7</sup> - B<sup>b</sup>9 /

Fmaj<sup>9</sup> --- F<sup>6</sup> --- Fm<sup>7</sup> - B<sup>b</sup>9 / Fm<sup>7</sup> - B<sup>b</sup>9 / Fmaj<sup>9</sup> --- F<sup>6</sup> ---

Fm<sup>7</sup> - B<sup>b</sup>9 / Fm<sup>7</sup> - B<sup>b</sup>9 / Fmaj<sup>9</sup> --- F<sup>6</sup> --- Fm<sup>7</sup> - B<sup>b</sup>9 / Fm<sup>7</sup> - B<sup>b</sup>9 /

Soli *mf* *E*

D<sup>b</sup>9 - Gm<sup>7</sup> / F - *mf* - f<sup>b</sup> - B<sup>b</sup> - E<sup>b</sup> -

*f*

126

# THE CREEPER

Composed and Arranged by  
NEAL HEFTI

CONDUCTOR

MEDIUM "Solo"

$\text{♩} = 120$   
18 BARS = 36 SEC.

BREASS

DR Solo

SAXS

LEBATO TONGUE

(A) BREASS (CUE MUTE)

2ND TRP Solo

WA 2ND TIME ONLY

SAXS

mf SOFTER 2X

WA

WA

1.

PIANO

2. TRP.

SAXS

OPEN BRASS

mf

(B) SAXS

DR Solo

BREASS



© Copyright 1961 by Neal Hefti Music, Inc., 57 West 56th St., New York 19, N. Y.  
 This arrangement © Copyright 1963 by Neal Hefti Music, Inc.  
 International Copyright Secured Printed in U.S.A.  
 All rights reserved including the right of public performance for profit



CONDUCTOR

This is a handwritten musical score for a conductor, organized into several systems of staves. The instruments and parts are as follows:

- System 1:** Saxes (top staff), Traps (middle staff), Brass (bottom staff). Includes dynamic marking *f*.
- System 2:** Saxes (top staff), Brass (bottom staff). Includes dynamic marking *f* and instruction "DR Solo".
- System 3:** Saxes (top staff), Piano/Guitar (middle staff), Traps/Tenors/Baritone (bottom staff). Includes dynamic marking *f* and instruction "DR Solo".
- System 4:** Saxes/Traps/Tenors (top staff), Side (bottom staff). Includes circled letter **C** and instruction "EGGIE TONGUE".
- System 5:** Traps/Tenors (top staff), Saxes (middle staff), Piano/Guitar (bottom staff). Includes circled letter **D**.
- System 6:** Traps/Tenors (top staff), Saxes (middle staff), Piano/Guitar/Bass/Saxes (bottom staff). Includes circled letter **E**.
- System 7:** Solo (top staff), Drums/Brass (middle staff), Saxes (bottom staff). Includes instruction "Solo" and dynamic marking *f*.
- System 8:** Saxes (top staff), Brass/Hats (middle staff), Bass (bottom staff). Includes dynamic marking *f*.